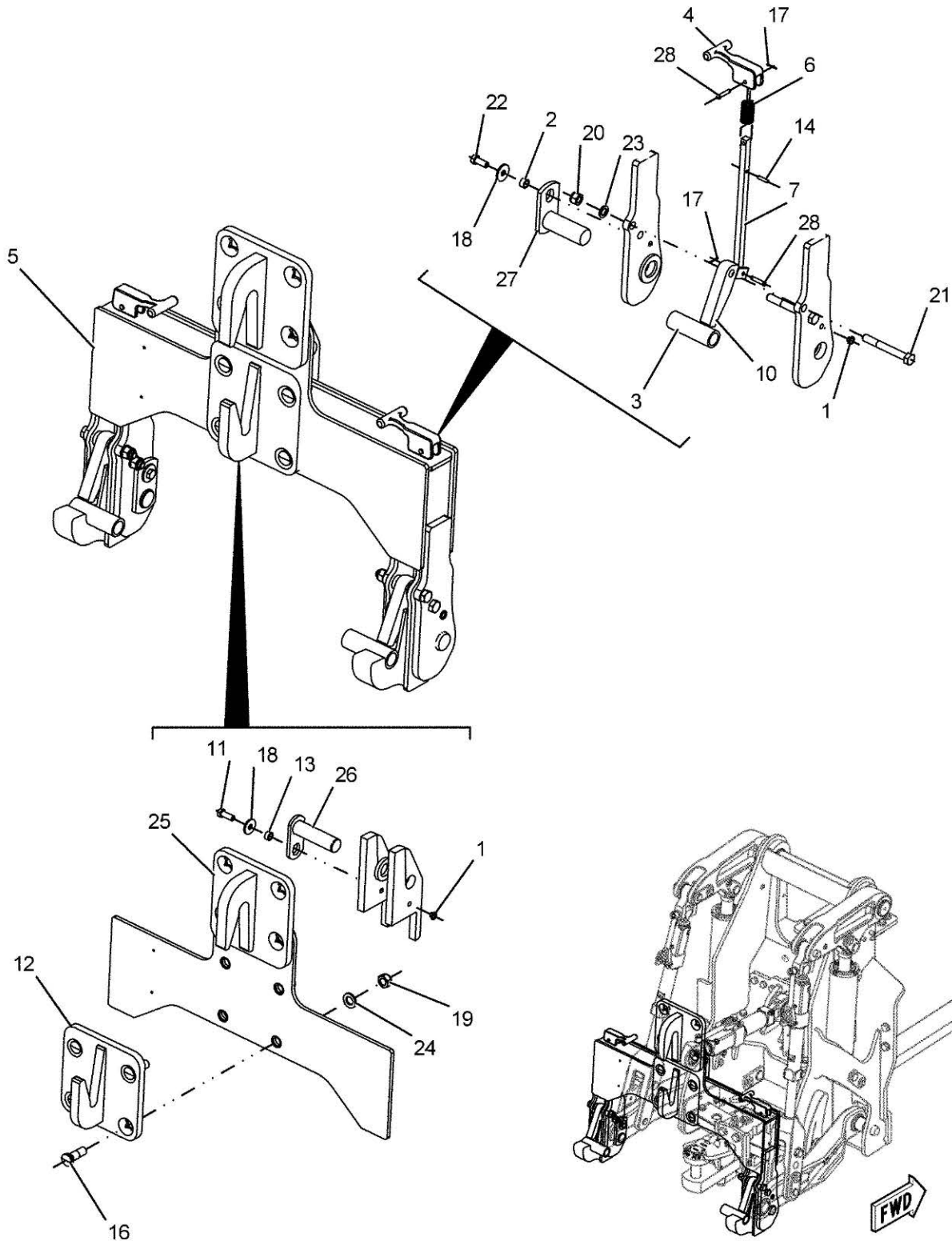


179-3318 - QUICK COUPLER GROUP	16-0001
180-6640 - QUICK COUPLER GROUP, CATAGORY 4	16-0002
520024D1 - 3 POINT HITCH GROUP, 3/4N	16-0003
520024D1 - 3 POINT HITCH GROUP, 3/4N	16-0004
538670D1 - 3 POINT HITCH CONTROL GROUP	16-0005
186-1063 - ROCKSHAFT GROUP	16-0006
186-1090 - LIFT LINK GROUP	16-0007
523438D1 - LINKAGE GROUP, CATAGORY 4, 3 POINT	16-0008
523438D1 - LINKAGE GROUP, CATAGORY 4, 3 POINT	16-0009
527328D1 - HITCH COMPENSATOR SPRING KIT	16-0010
527329D1 - HITCH CARTRIDGE VALVE KIT	16-0011
548951D1 - LINK GROUP, UPPER	16-0012
525741D1 - LIMITER ASSEMBLY, LEFT HAND	16-0013
525742D1 - LIMITER ASSEMBLY, RIGHT HAND	16-0014
CH198-8789 - HYDRAULIC CYLINDER GROUP, LIFT, 125MM BORE X 345MM STROKE	16-0015
CH192-6280 - HYDRAULIC CYLINDER GROUP, SEAL, 3 POINT HITCH LIFT	16-0016
199-7638 - CYLINDER	16-0017

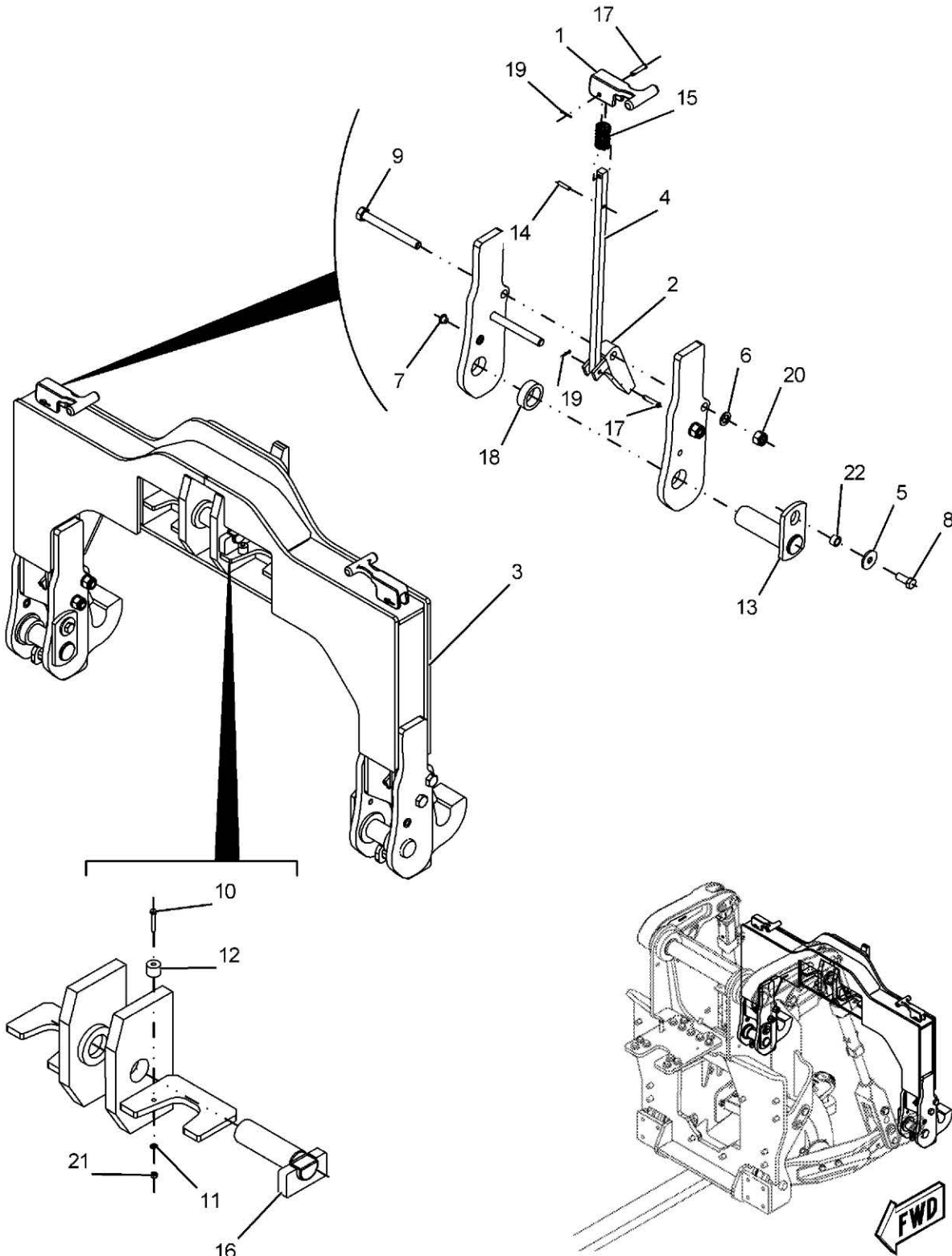
179-3318-8-AA359-



**179-3318 - QUICK COUPLER GROUP**

ITEM	PART NUMBER	QTY	DESCRIPTION COMMENTS	TECHNICAL SPECIFICATION
1	400093X1	6	PLASTIC PLUG	M14
2	CH6Y-8112	2	SPACER	17MM ID X 25MM OD X 14MM
3	CH104-3466	2	BUSHING	
4	177-0661	2	HANDLE	
5	189-3310	1	FRAME	
6	CH190-2584	2	SPRING	35.79MM DIA X 76.2MM
7	190-2601	2	ROD	
10	196-2997	2	PLATE	
11	400244X1	1	BOLT	M16 X 2 X 45MM, CL10.9
12	196-2993	1	HOOK PLATE, CATEGORY 3	
13	CH200-0010	1	SPACER	17.5MM X 25.4MM X 12.5MM
14	CH183-5008	2	SPRING PIN	7.94MM DIA X 38MM
16	400270X1	4	BOLT	
17	CH3B-4617	4	COTTER PIN	3.2MM X 25MM
18	400078X1	4	FLAT WASHER	16.5MM X 50MM X 5MM
19	CH6K-3632	4	HEX LOCKNUT	1"-8
20	CH6V-7688	4	LOCKNUT	M20 X 2.5MM THD
21	400026X1	4	HEXAGONAL HEAD BOLT	M20 X 2.5 X 160MM, CL10.9
22	400191X1	2	HEXAGONAL HEAD BOLT	M16 X 2 X 40MM, CL 10.9
23	400080X1	4	FLAT WASHER	22MM X 35MM X 3.5MM
24	CH8T-5361	4	WASHER	28MM ID X 49MM OD X 5MM
25	196-2994	1	HOOK PLATE, CATEGORY 4	
26	570579D1	1	LINKAGE PIN	44.425MM DIA X 160MM
27	570701D1	2	LINKAGE PIN	50.78MM DIA X 137MM
28	CH1A-8827	4	CLEVIS PIN	3/8" X 1-1/2"

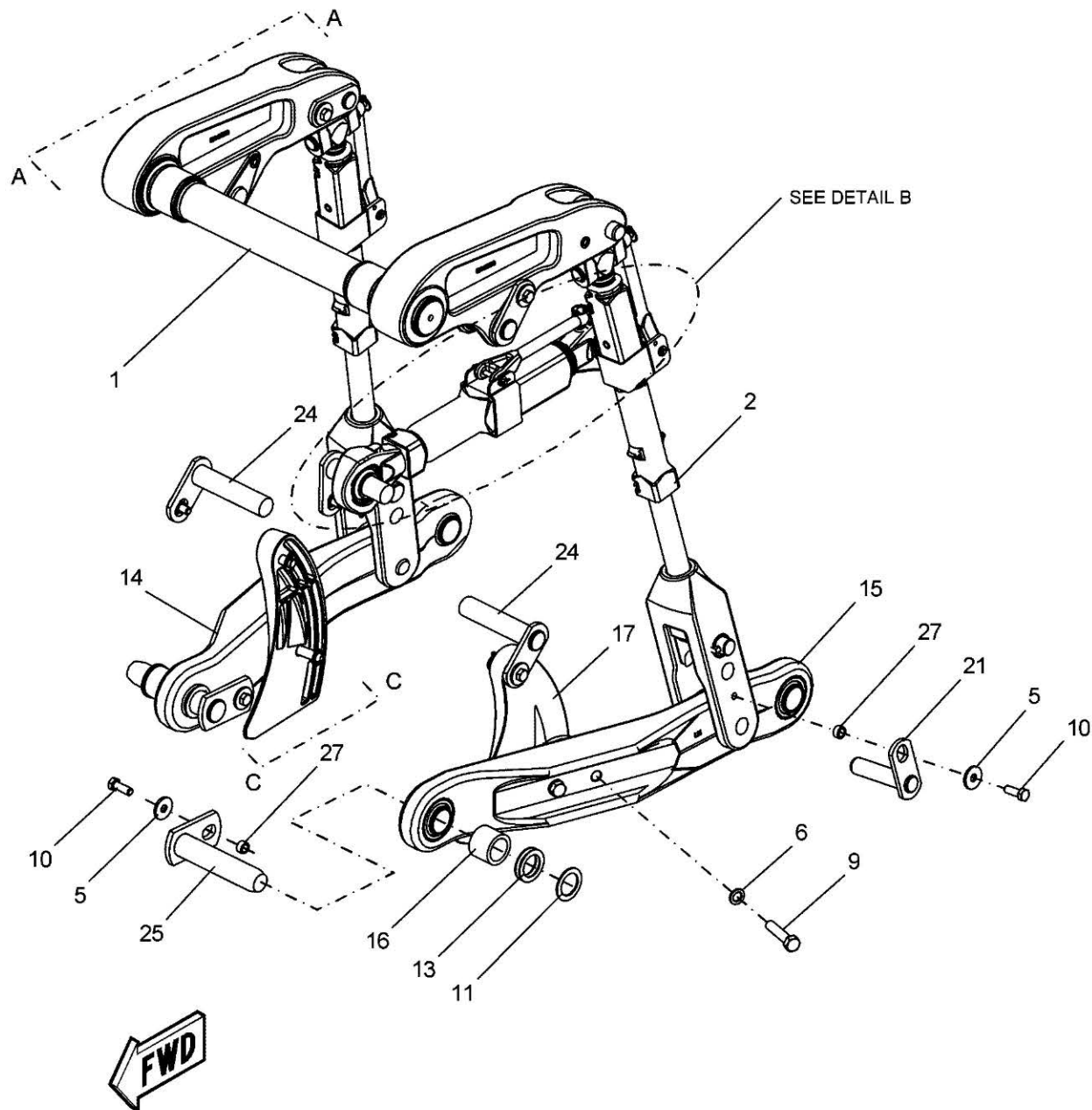
180-6640-6-AA359-



**180-6640 - QUICK COUPLER GROUP, CATAGORY 4**

ITEM	PART NUMBER	QTY	DESCRIPTION COMMENTS	TECHNICAL SPECIFICATION
1	177-0661	2	HANDLE	
2	196-2997	2	PLATE	
3	206-4613	1	FRAME	
4	206-4633	2	LIFT ROD	
5	400078X1	2	FLAT WASHER	16.5MM X 50MM X 5MM
6	400080X1	4	FLAT WASHER	22MM X 35MM X 3.5MM
7	400093X1	4	PLASTIC PLUG	M14
8	400191X1	1	HEXAGONAL HEAD BOLT	M16 X 2 X 40MM, CL 10.9
9	400194X1	4	HEXAGONAL HEAD BOLT	M20 X 2.5 X 180MM, CL10.9
10	400205X1	1	HEXAGONAL HEAD BOLT	M6 X 1 X 40MM, CL10.9
11	400310X1	1	FLAT WASHER	6.6MM ID X 12MM OD X 2MM
12	500754D1	1	SPACER	7.8MM ID X 25MM OD X 19MM
13	570705D1	2	LINKAGE PIN	50.78MM DIA X 162MM
14	CH183-5008	2	SPRING PIN	7.94MM DIA X 38MM
15	CH190-2584	2	SPRING	35.79MM DIA X 76.2MM
16	CH196-3019	1	LINKAGE PIN	44.425MM DIA X 164MM
17	CH1A-8827	4	CLEVIS PIN	3/8" X 1-1/2"
18	CH206-4636	2	SPACER	51.3MM ID X 70MM OD X 22MM
19	CH3B-4617	4	COTTER PIN	3.2MM X 25MM
20	CH6V-7688	4	LOCKNUT	M20 X 2.5MM THD
21	CH6V-8225	1	HEX NUT	M6 X 1MM X 5MM
22	CH6Y-8112	2	SPACER	17MM ID X 25MM OD X 14MM

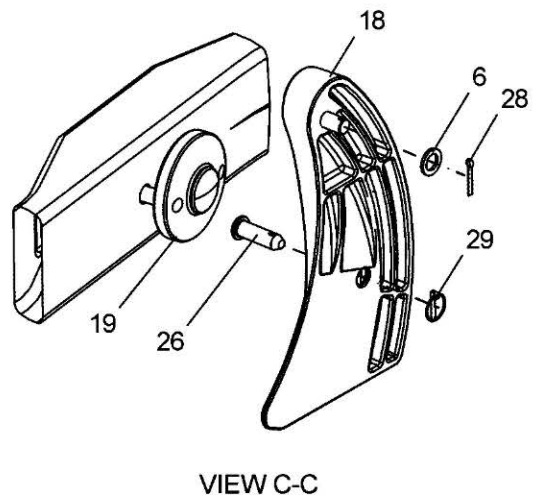
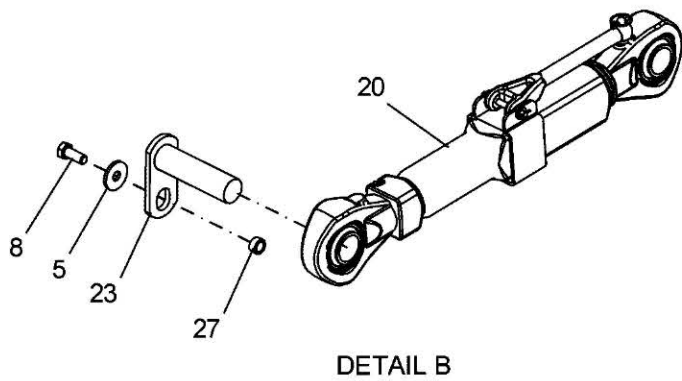
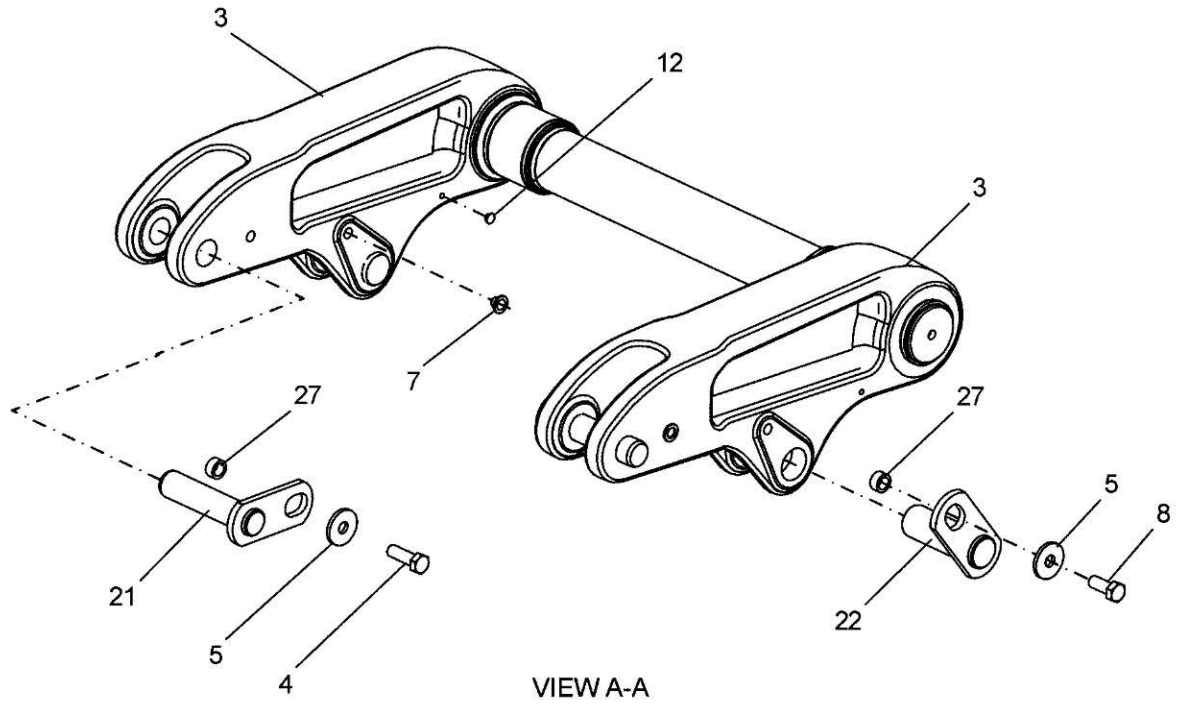
520024D1-5-AA359-01



**520024D1 - 3 POINT HITCH GROUP, 3/4N**

ITEM	PART NUMBER	QTY	DESCRIPTION COMMENTS	TECHNICAL SPECIFICATION
	589810D1	2	PIN ASSEMBLY NOT SHOWN	36.45DIA X 128
1	NS	1	NON-SERVICEABLE PART SEE PAGE 16-0006	
2	NS	2	NON-SERVICEABLE PART SEE PAGE 16-0007	
5	400078X1	11	FLAT WASHER	16.5MM X 50MM X 5MM
6	400080X1	6	FLAT WASHER	22MM X 35MM X 3.5MM
9	400193X1	4	HEXAGONAL HEAD BOLT	M20 X 2.5 X 90MM, CL10.9
10	400244X1	4	BOLT	M16 X 2 X 45MM, CL10.9
11	400288X1	1	FLAT WASHER	51MM X 74MM X 3MM
13	401107X1		WASHER	51MM ID X 74MM OD X 2MM
14	507126D2	1	LOWER LINK	
15	507127D2	1	LOWER LINK	
16	525664D1	2	SPACER	
17	NS	1	NON-SERVICEABLE PART SEE PAGE 16-0013	
21	569094D1	2	LINKAGE PIN	36.45MM DIA X 150MM
24	570581D1	2	LINKAGE PIN	44.425MM DIA X 200MM
25	570706D1	2	LINKAGE PIN	50.78MM DIA X 233MM
27	CH200-0010	11	SPACER	17.5MM X 25.4MM X 12.5MM

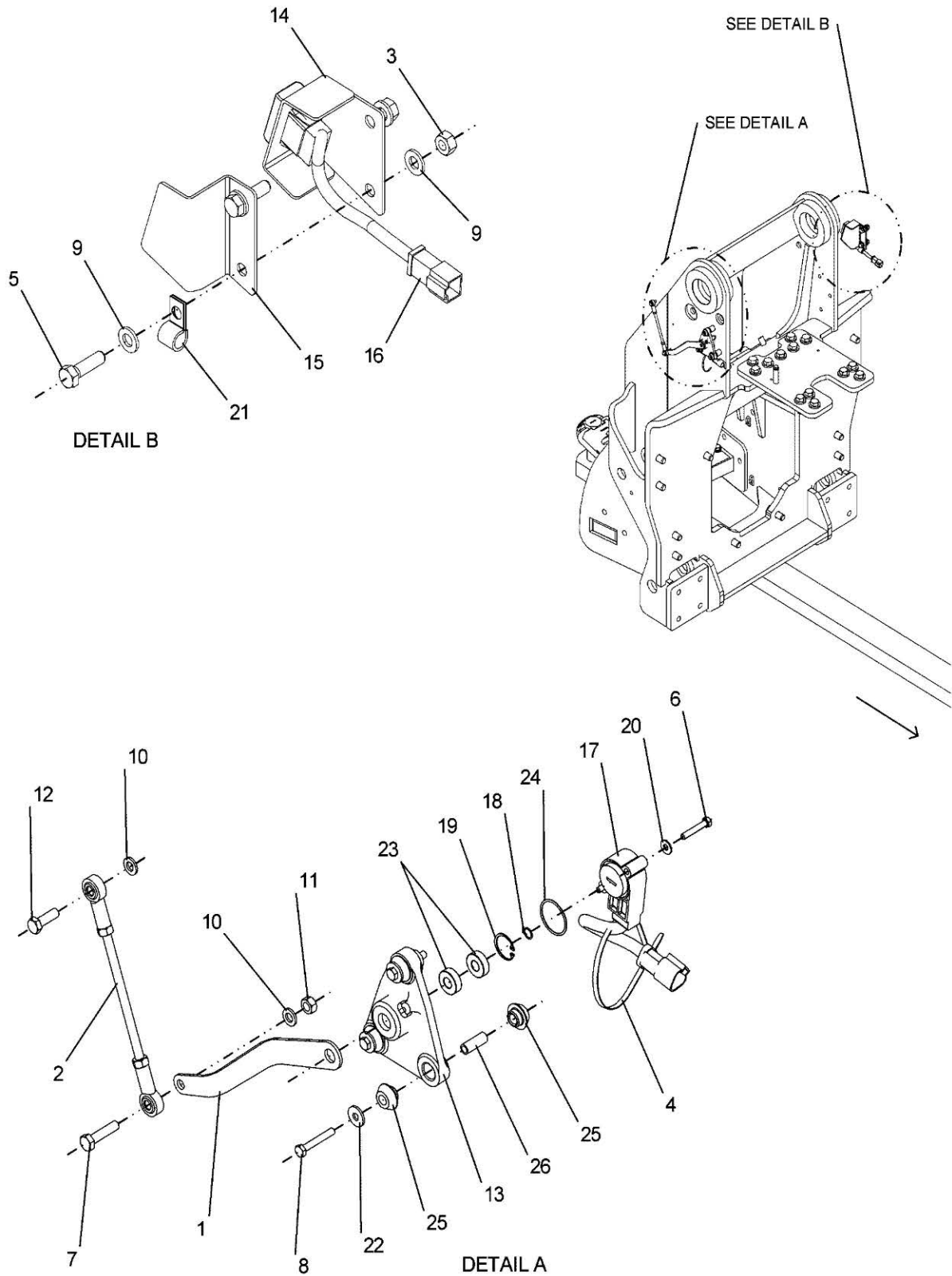
520024D1-5-AA359-02



**520024D1 - 3 POINT HITCH GROUP, 3/4N**

ITEM	PART NUMBER	QTY	DESCRIPTION COMMENTS	TECHNICAL SPECIFICATION
	589810D1	2	PIN ASSEMBLY NOT SHOWN	36.45DIA X 128
3	190-2624	2	LIFT ARM	
4	400056X1	2	HEXAGONAL HEAD BOLT	M16 X 2 X 50MM, CL10.9
5	400078X1	11	FLAT WASHER	16.5MM X 50MM X 5MM
6	400080X1	6	FLAT WASHER	22MM X 35MM X 3.5MM
7	400093X1	6	PLASTIC PLUG	M14
8	400191X1	5	HEXAGONAL HEAD BOLT	M16 X 2 X 40MM, CL 10.9
12	400289X1	1	PROTECTIVE PLUG PLASTIC	M7
18	NS	1	NON-SERVICEABLE PART SEE PAGE 16-0014	
19	527913D1	2	BLOCK	
20	NS	1	NON-SERVICEABLE PART SEE PAGE 16-0012	
21	569094D1	2	LINKAGE PIN	36.45MM DIA X 150MM
22	570577D1	2	LINKAGE PIN	44.425MM DIA X 117MM
23	570579D1	1	LINKAGE PIN	44.425MM DIA X 160MM
26	CH152-4241	2	PIN	
27	CH200-0010	11	SPACER	17.5MM X 25.4MM X 12.5MM
28	CH3B-4629	2	COTTER PIN	3/16" X 1-1/2"
29	CH5D-8159	2	LYNCH PIN CLIP	3/16"

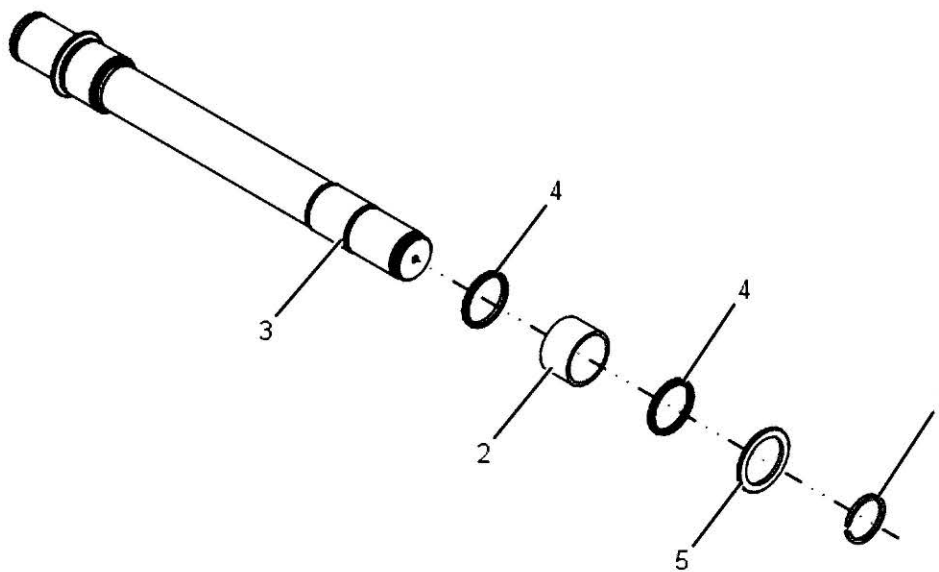
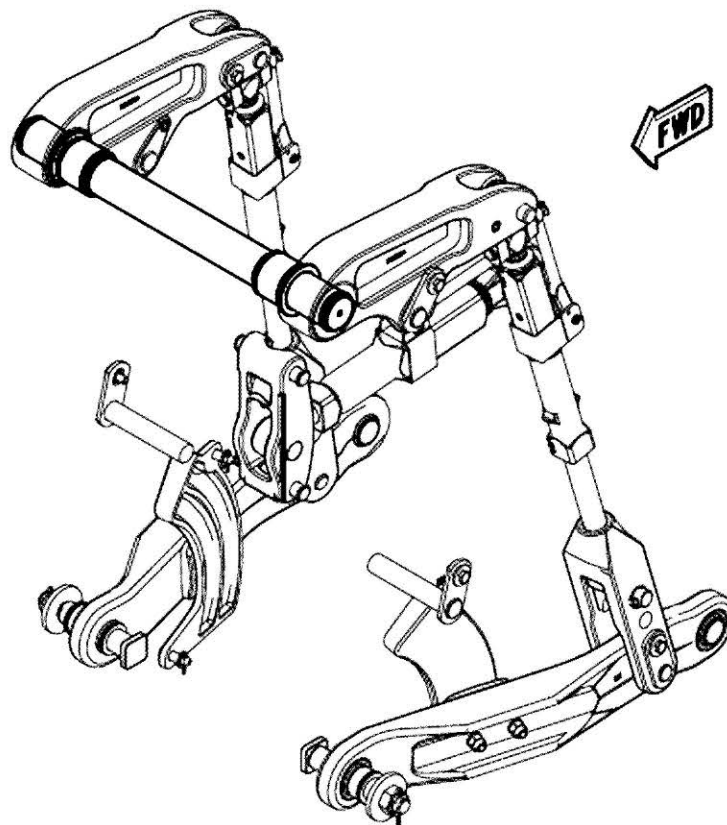
538670D1-2-Y578



**538670D1 - 3 POINT HITCH CONTROL GROUP**

ITEM	PART NUMBER	QTY	DESCRIPTION COMMENTS	TECHNICAL SPECIFICATION
1	190-2838	1	SENSOR ARM POSITION	
2	190-2839	1	ROD POSITION SENSOR	
	CH7X-7915	2	END ROD	
	400340X1	2	HEX NUT	M8 X 1.25MM X 13MM
3	7774664	2	HEX NUT	M10 X 1.5
4	AG554278	1	CABLE TIE	11" X 1/16" X 3-1/16"
5	400052X1	2	HEXAGONAL HEAD BOLT	M10 X 1.5 X 40MM, CL10.9
6	400160X1	2	HEXAGONAL HEAD BOLT	M5 X .8 X 30MM, CL8.8
7	400188X1	1	HEXAGONAL HEAD BOLT	M8 X 1.25 X 35MM, CL10.9
8	400205X1	3	HEXAGONAL HEAD BOLT	M6 X 1 X 40MM, CL10.9
9	400287X1	4	FLAT WASHER	11MM X 21MM X 2.5MM
10	400339X1	2	FLAT WASHER	9MM X 16MM X 2MM
11	400340X1	1	HEX NUT	M8 X 1.25MM X 13MM
12	400341X1	1	HEXAGONAL HEAD BOLT	M8 X 1.25 X 25MM
13	4E-2250	1	HOUSING	
14	521082D1	1	SWITCH BRACKET	
15	521083D1	1	SWITCH BRACKET	
16	536282D1	1	3PT HITCH UP/DOWN ROCKER SWITCH 3 POINT HITCH UP / DOWN ROCKER SWITCH	
	549926D1	1	COVER	IDENT,RAISE/LOWER
	400708X1	1	RECEPTACLE	4 PIN (C2)
17	536818D1	1	POSITION SENSOR	
18	CH2H-3429	1	EXTERNAL RETAINING RING	8.9MM ID X 0.6MM
19	CH2L-6726	1	INTERNAL RETAINING RING	23.65MM OD X 1.07MM
20	CH4B-4274	2	FLAT WASHER	5.5MM X 130MM X 1.2MM
21	CH4K-8864	1	P-CLIP	14.29 ID
22	CH5P-4115	3	FLAT WASHER	7.2MM X 19MM X 2MM
23	CH6D-3025	2	BALL BEARING	
24	CH6V-0894	1	O-RING	29.87MM ID X 1.78MM DIA
25	CH8C-5607	6	INSULATION	
26	CH8C-5608	3	SPACER	6.5MM ID X 9.5MM OD X 25.4MM

186-1063-03-

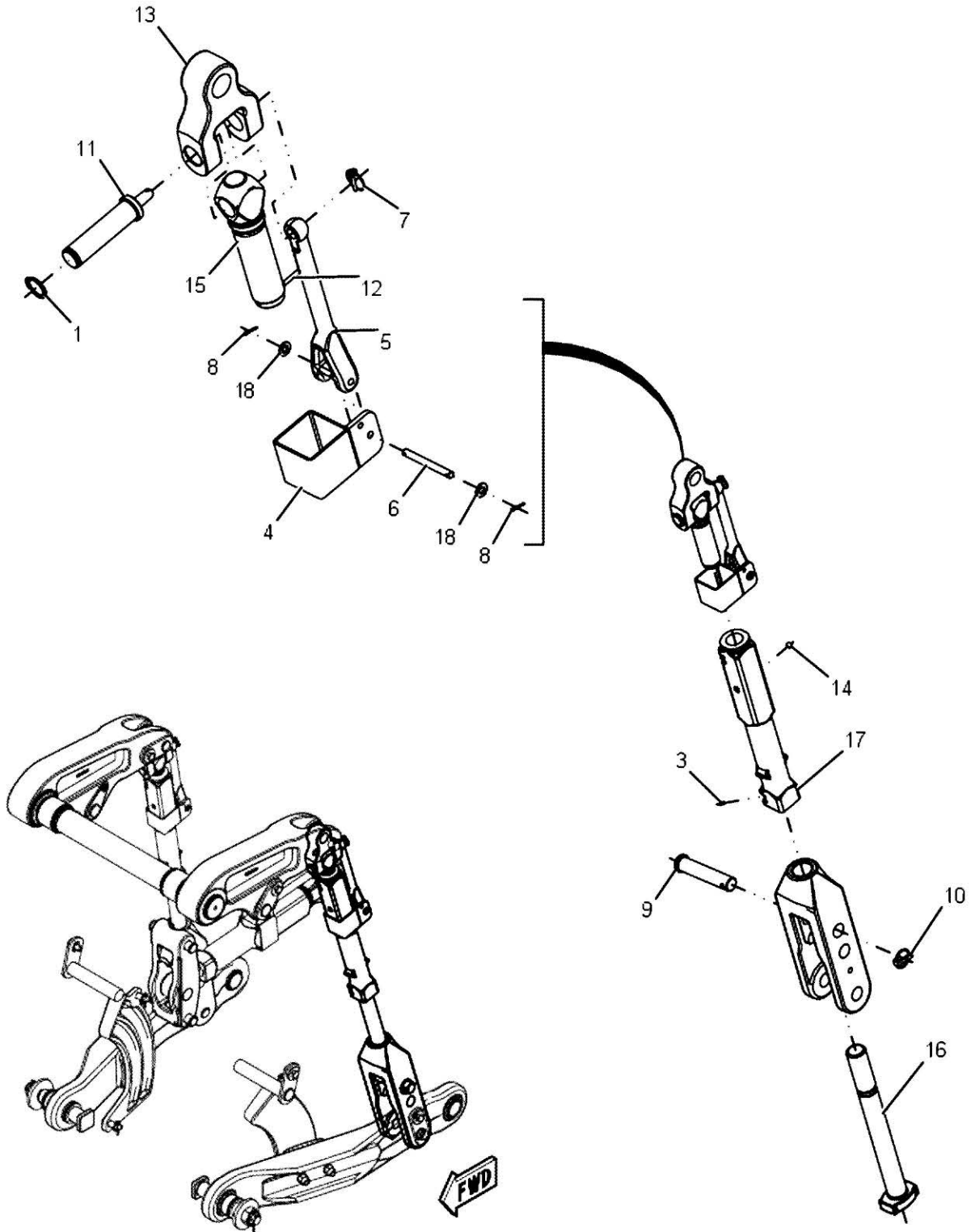


**186-1063 - ROCKSHAFT GROUP**

---

ITEM	PART NUMBER	QTY	DESCRIPTION COMMENTS	TECHNICAL SPECIFICATION
1	400097X1	2	EXTERNAL RETAINING RING	78.1MM ID X 6.35MM
2	CH170-2320	2	BEARING	89 ID X 101.7 OD X 6
3	186-1064	1	ROCKER SHAFT TOOTH	
4	CH7K-9211	4	PIN SEAL	PIN 88.9PINX101.7OD
5	CH6K-9070	2	WASHER	89.6 IDX11

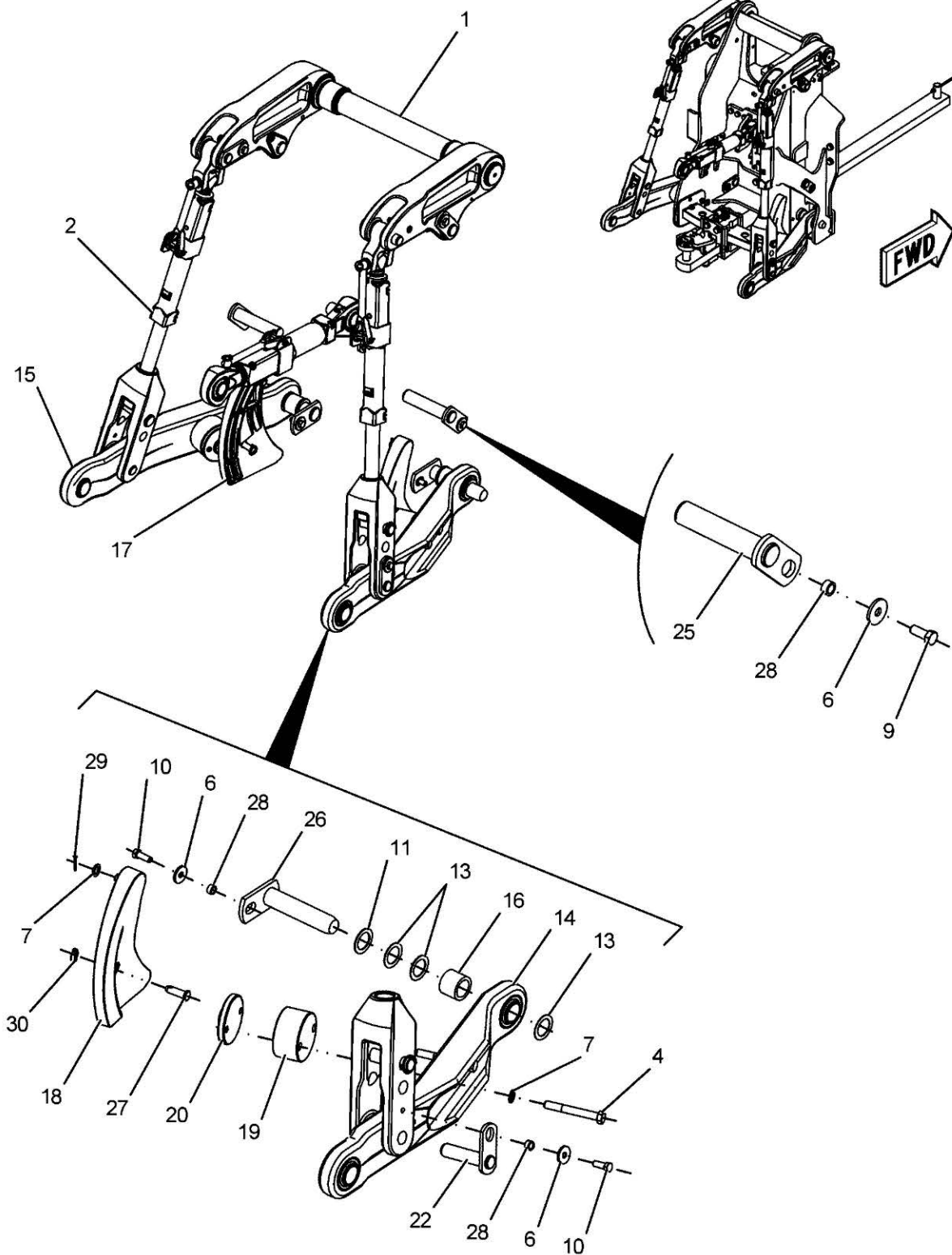
186-1090-02-



**186-1090 - LIFT LINK GROUP**

ITEM	PART NUMBER	QTY	DESCRIPTION COMMENTS	TECHNICAL SPECIFICATION
1	400290X1	1	EXTERNAL RETAINING RING	29MM ID X 2.36MM
3	CH6V-1506	2	UNION	
4	184-5063	1	FRAME	
5	189-3296	1	LINK HANDLE UPPER	
6	CH186-1069	1	PIN	10MM OD X 97MM
7	CH5D-8159	1	LYNCH PIN CLIP LINCH	3/16"
8	CH095-0845	2	PIN	2.5MM DIA X 20 MM
9	CH186-1096	1	PIN	
10	CH119-1329	1	PIN	11.1 DIA STL
11	CH186-1081	1	PIN	32MM OD X 125MM
12	CH095-9230	1	PIN	6MM OD X 32MM
13	186-0983	1	PIVOT	
14	CH0T-0200	2	CUP PLUG	14.58MM OD X 6.35MM
15	186-1020	1	ROD END UPPER	
16	CH186-1094	1	ROD LIFT LINK	
17	186-1095	1	TUBE	
18	400287X1	2	FLAT WASHER	11MM X 21MM X 2.5MM

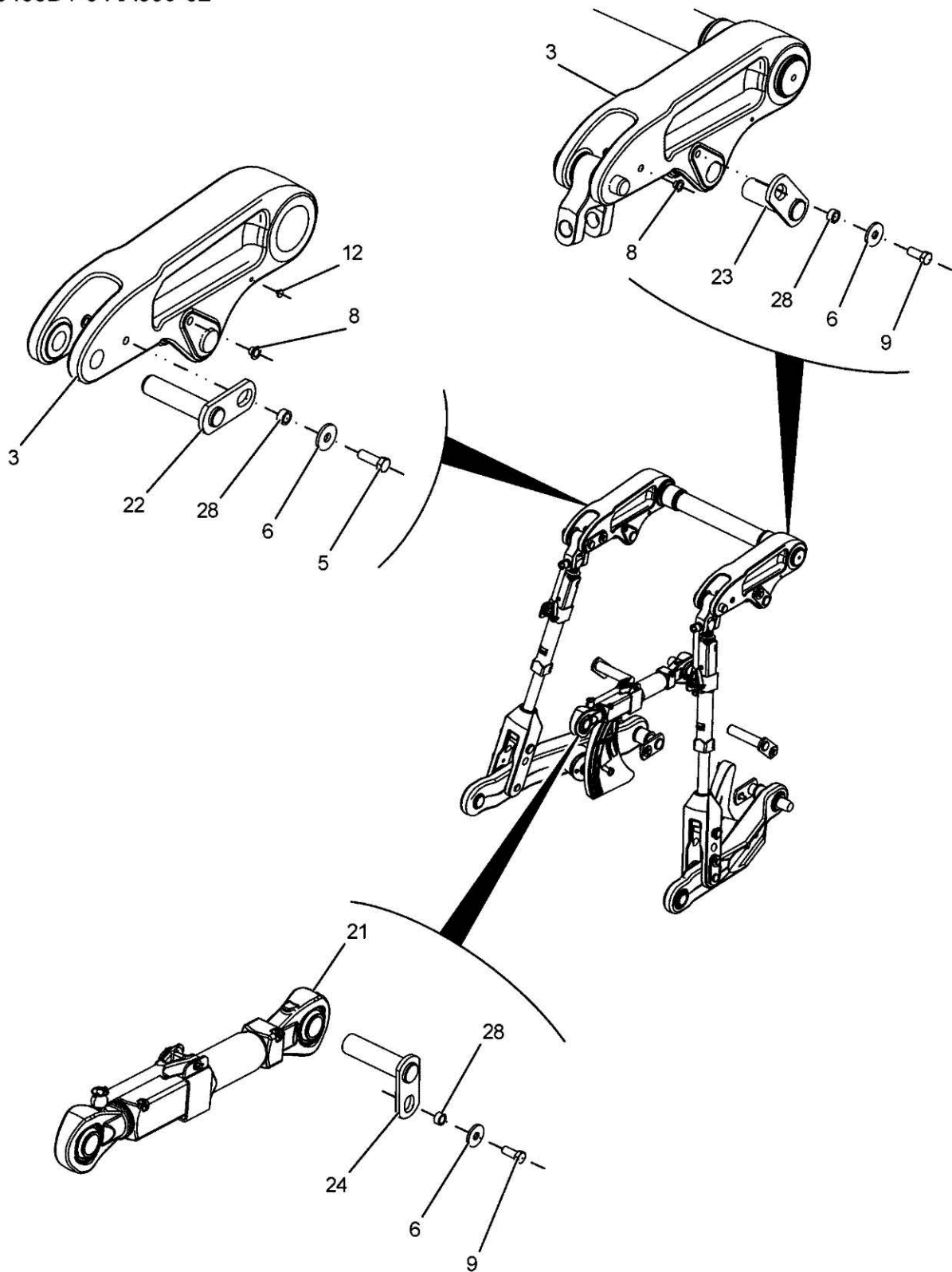
523438D1-5-AA359-01



**523438D1 - LINKAGE GROUP, CATAGORY 4, 3 POINT**

ITEM	PART NUMBER	QTY	DESCRIPTION COMMENTS	TECHNICAL SPECIFICATION
	589810D1	2	PIN ASSEMBLY NOT SHOWN	36.45DIA X 128
1	NS	1	NON-SERVICEABLE PART SEE PAGE 16-0006	
2	NS	2	NON-SERVICEABLE PART SEE PAGE 16-0007	
4	400026X1	4	HEXAGONAL HEAD BOLT	M20 X 2.5 X 160MM, CL10.9
6	400078X1	11	FLAT WASHER	16.5MM X 50MM X 5MM
7	400080X1	6	FLAT WASHER	22MM X 35MM X 3.5MM
9	400191X1	5	HEXAGONAL HEAD BOLT	M16 X 2 X 40MM, CL 10.9
10	400244X1	4	BOLT	M16 X 2 X 45MM, CL10.9
11	400288X1	2	FLAT WASHER	51MM X 74MM X 3MM
13	401107X1	-	WASHER USE ONE 401107X1 ON THE OUTSIDE OF EACH LINK AS REQUIRED TO REDUCE THE GAP BETWEEN THE SPACER AND THE FRAME. ONLY ADD OR REMOVE WASHERS ON THE INSIDE FACE OF THE LINK ASSEMBLY. THE NOMINAL REQUIREMENT IS (4) 401107X1 PER TRACTOR.	51MM ID X 74MM OD X 2MM
14	507126D2	1	LOWER LINK	
15	507127D2	1	LOWER LINK	
16	525664D1	2	SPACER	
17	NS	1	NON-SERVICEABLE PART SEE PAGE 16-0013	
18	NS	1	NON-SERVICEABLE PART SEE PAGE 16-0014	
19	527683D1	2	SPACER	
20	527913D1	2	BLOCK	
22	569094D1	4	LINKAGE PIN	36.45MM DIA X 150MM
25	570581D1	2	LINKAGE PIN	44.425MM DIA X 200MM
26	570706D1	2	LINKAGE PIN	50.78MM DIA X 233MM
27	CH152-4241	2	PIN	
28	CH200-0010	11	SPACER	17.5MM X 25.4MM X 12.5MM
29	CH3B-4629	2	COTTER PIN	3/16" X 1-1/2"
30	CH5D-8159	2	LYNCH PIN CLIP	3/16"

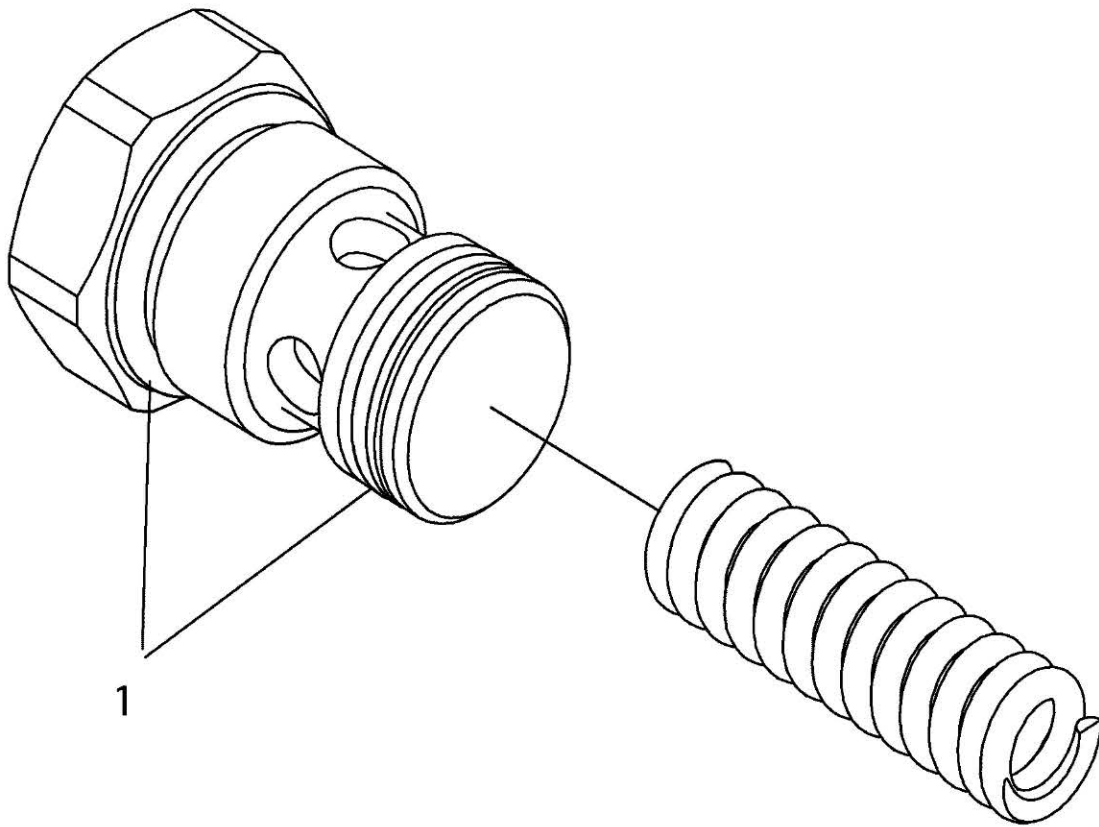
523438D1-5-AA359-02



**523438D1 - LINKAGE GROUP, CATAGORY 4, 3 POINT**

ITEM	PART NUMBER	QTY	DESCRIPTION COMMENTS	TECHNICAL SPECIFICATION
	589810D1	2	PIN ASSEMBLY NOT SHOWN	36.45DIA X 128
3	190-2624	2	LIFT ARM	
5	400056X1	2	HEXAGONAL HEAD BOLT	M16 X 2 X 50MM, CL10.9
6	400078X1	11	FLAT WASHER	16.5MM X 50MM X 5MM
8	400093X1	6	PLASTIC PLUG	M14
9	400191X1	5	HEXAGONAL HEAD BOLT	M16 X 2 X 40MM, CL 10.9
12	400289X1	1	PROTECTIVE PLUG PLASTIC	M7
21	NS	1	NON-SERVICEABLE PART SEE PAGE 16-0012	
22	569094D1	2	LINKAGE PIN	36.45MM DIA X 150MM
23	570577D1	2	LINKAGE PIN	44.425MM DIA X 117MM
24	570579D1	1	LINKAGE PIN	44.425MM DIA X 160MM
28	CH200-0010	11	SPACER	17.5MM X 25.4MM X 12.5MM

527328D1-01-V248

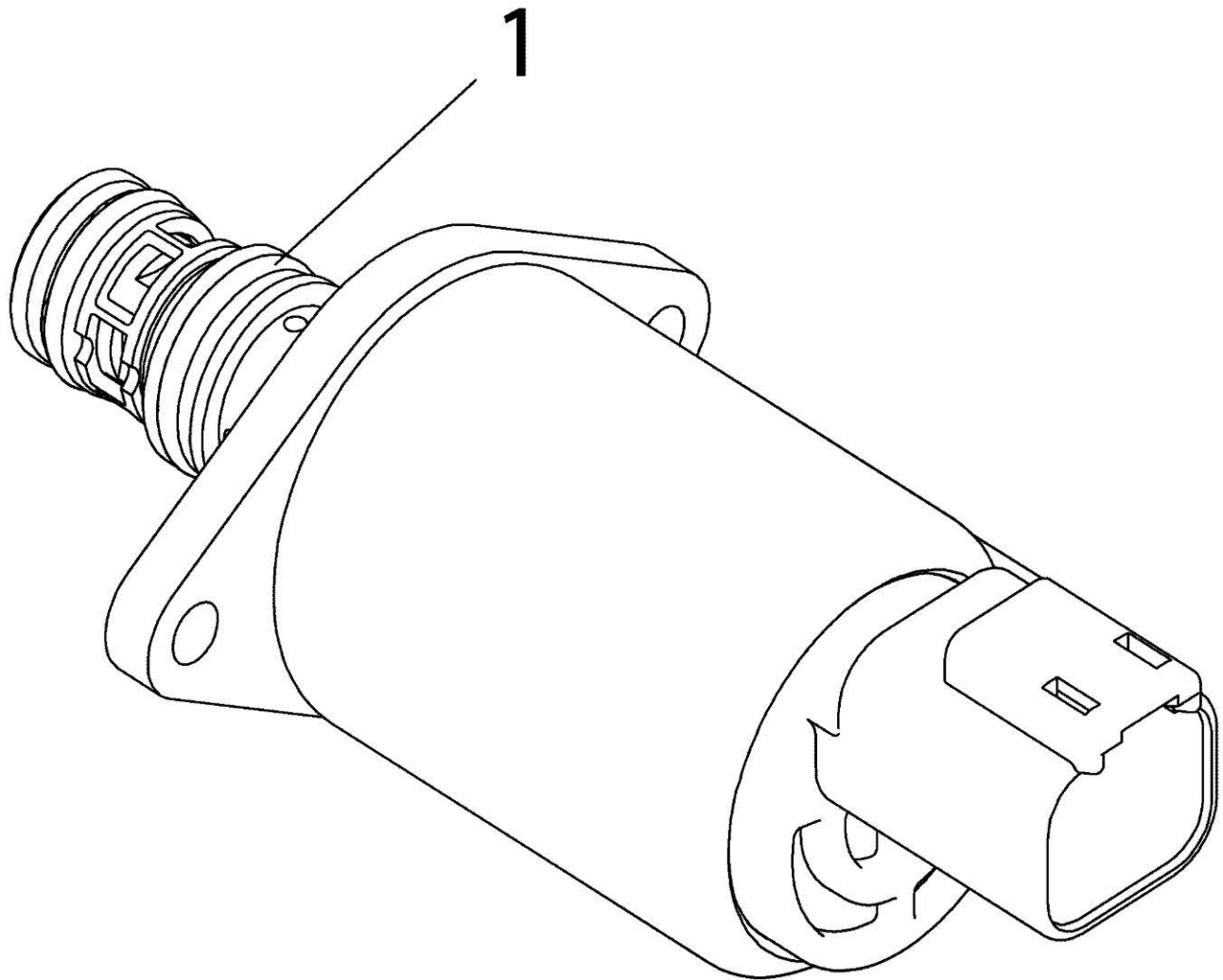


## 527328D1 - HITCH COMPENSATOR SPRING KIT

---

ITEM	PART NUMBER	QTY	DESCRIPTION COMMENTS	TECHNICAL SPECIFICATION
1	532535D1	-	SEAL KIT COMPENSATOR PLUG	

527329D1-01-V227

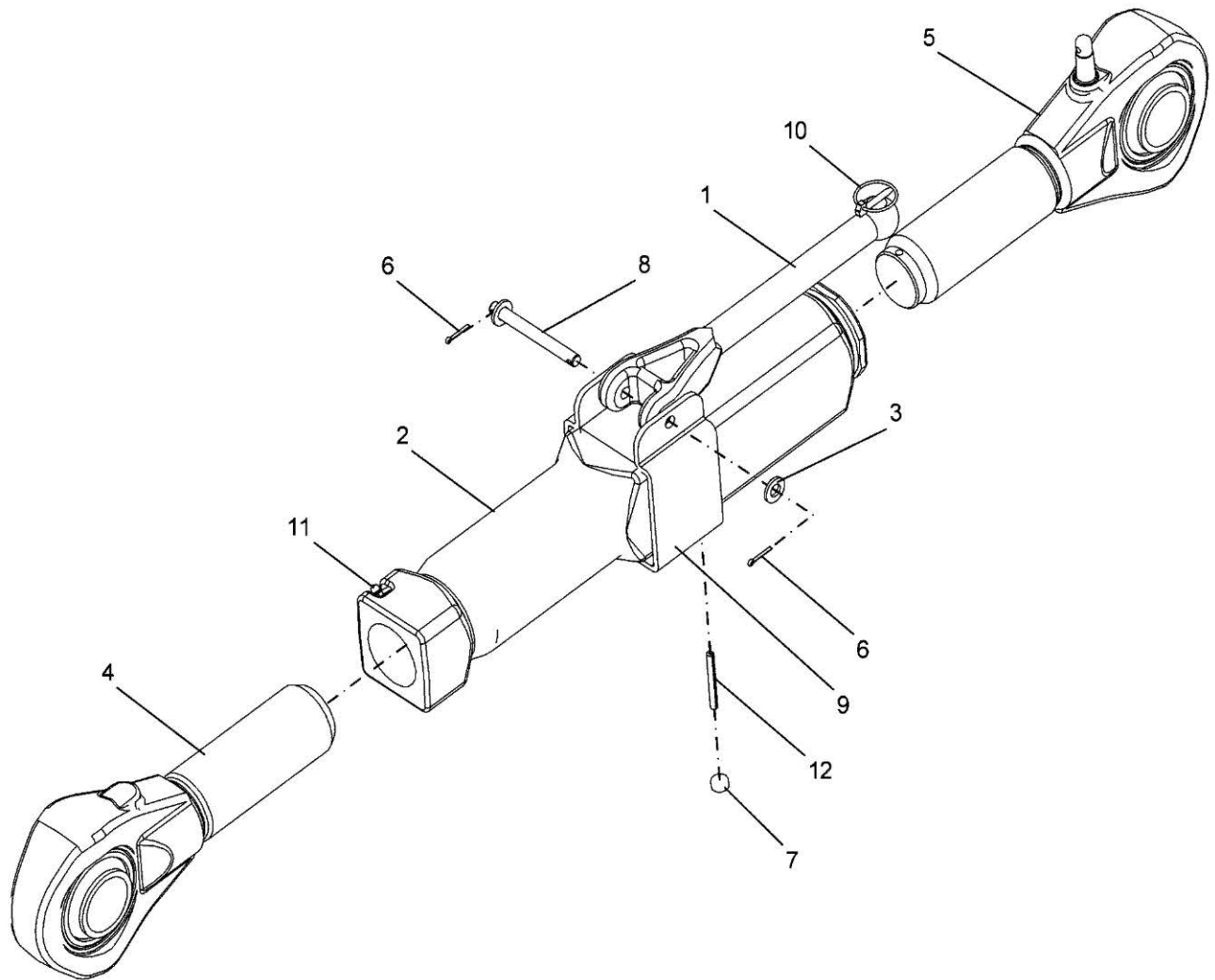


**527329D1 - HITCH CARTRIDGE VALVE KIT**

---

ITEM	PART NUMBER	QTY	DESCRIPTION COMMENTS	TECHNICAL SPECIFICATION
1	532039D1	1	SEAL KIT VALVE	

548951D1-2-Y599

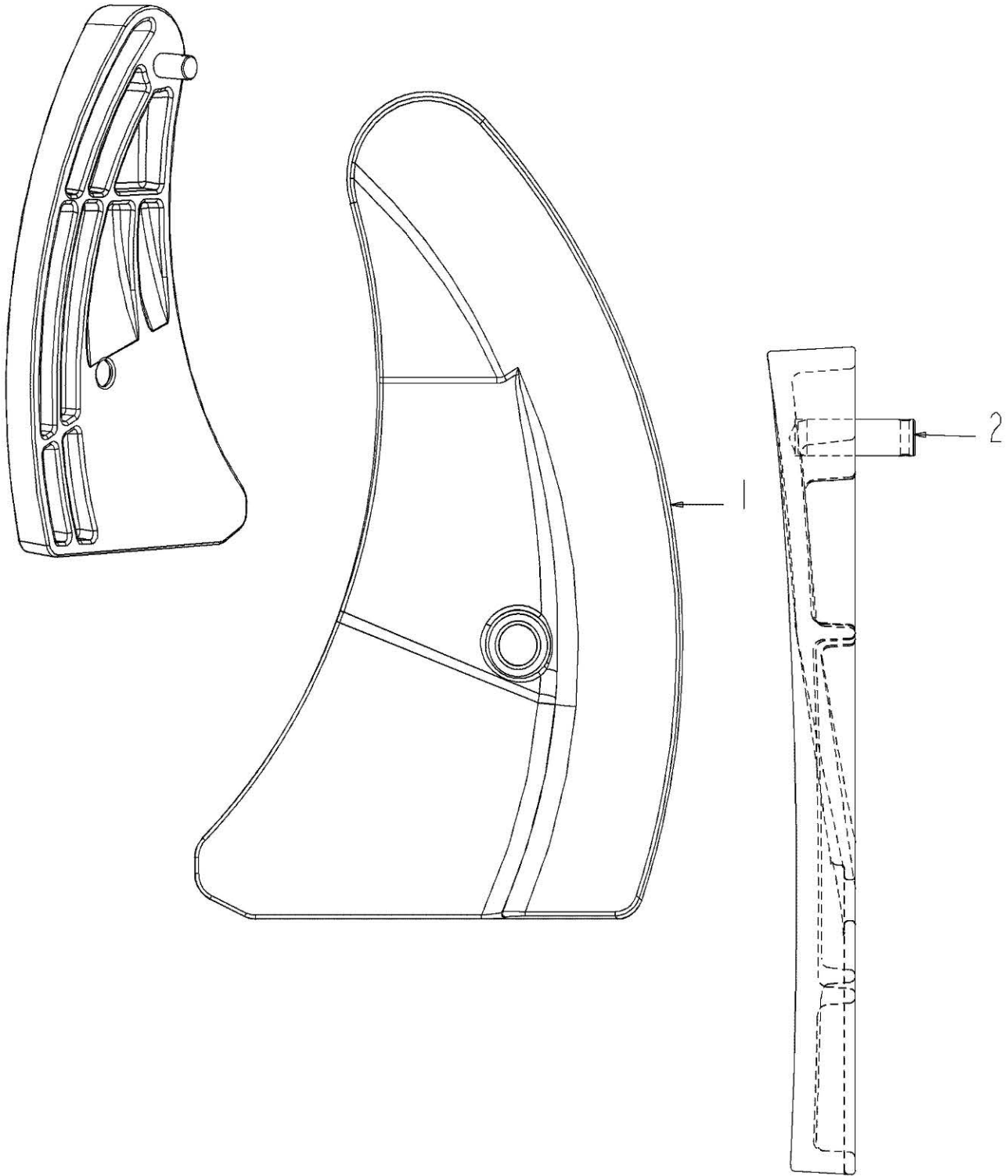


**548951D1 - LINK GROUP, UPPER**

---

ITEM	PART NUMBER	QTY	DESCRIPTION COMMENTS	TECHNICAL SPECIFICATION
1	189-3296	1	LINK HANDLE UPPER	
2	210-7523	1	TUBE UPPER	
3	400287X1	2	FLAT WASHER	11MM X 21MM X 2.5MM
4	507134D1	1	TOGGLE ROD	
5	548952D1	1	ROD END	LH
6	CH095-0845	2	PIN	2.5MM DIA X 20 MM
7	CH0T-0200	2	CUP PLUG	14.58MM OD X 6.35MM
8	CH186-1069	1	PIN	10MM OD X 97MM
9	CH189-3284	1	FRAME	
10	CH5D-8159	1	LYNCH PIN CLIP LINCH	3/16"
11	CH6V-1506	2	UNION	
12	CH6V-8130	1	PIN	

525741D1-01-T203

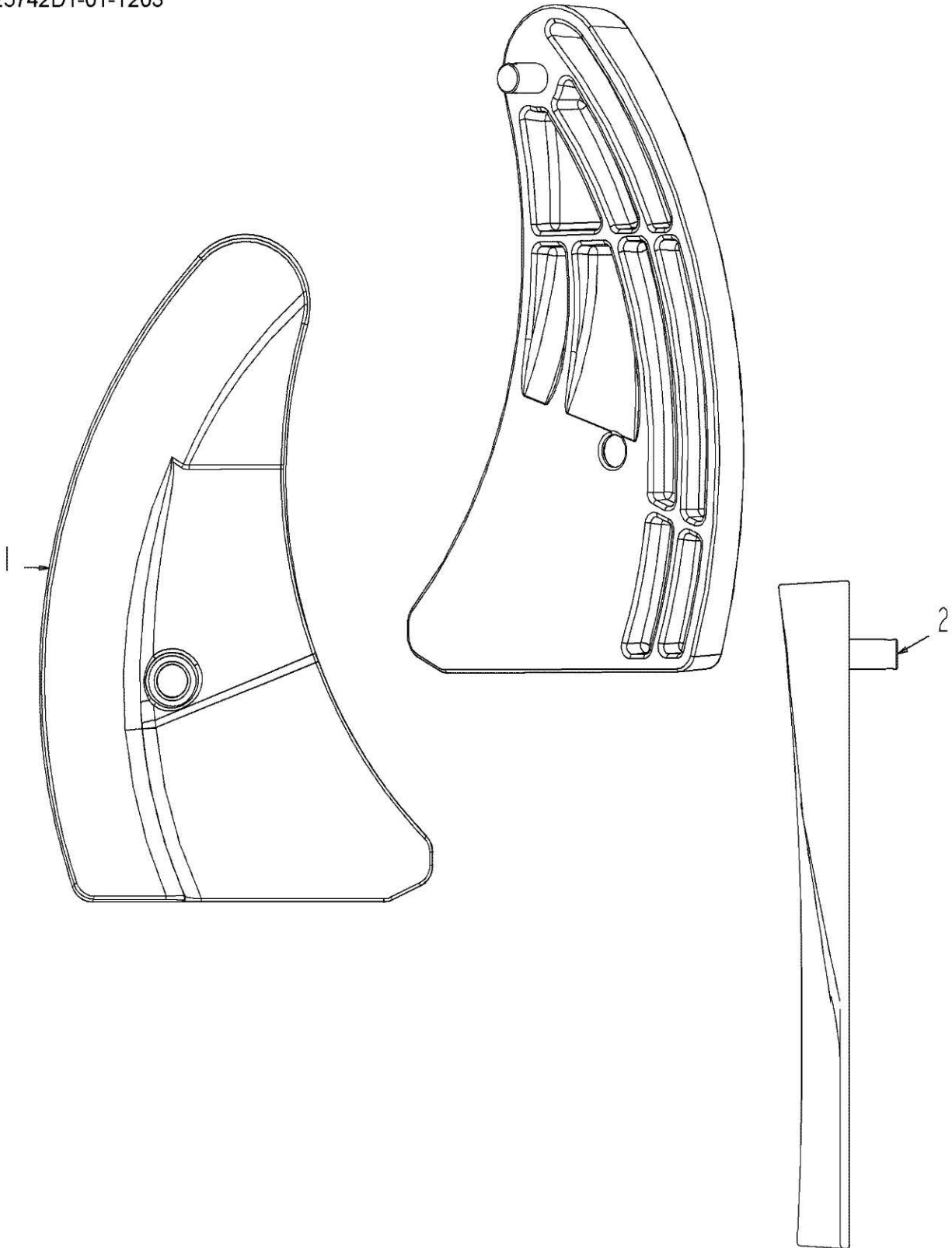


**525741D1 - LIMITER ASSEMBLY, LEFT HAND**

---

ITEM	PART NUMBER	QTY	DESCRIPTION COMMENTS	TECHNICAL SPECIFICATION
1	NS	1	NON-SERVICEABLE PART	
2	525743D1	1	PIN	

525742D1-01-T203

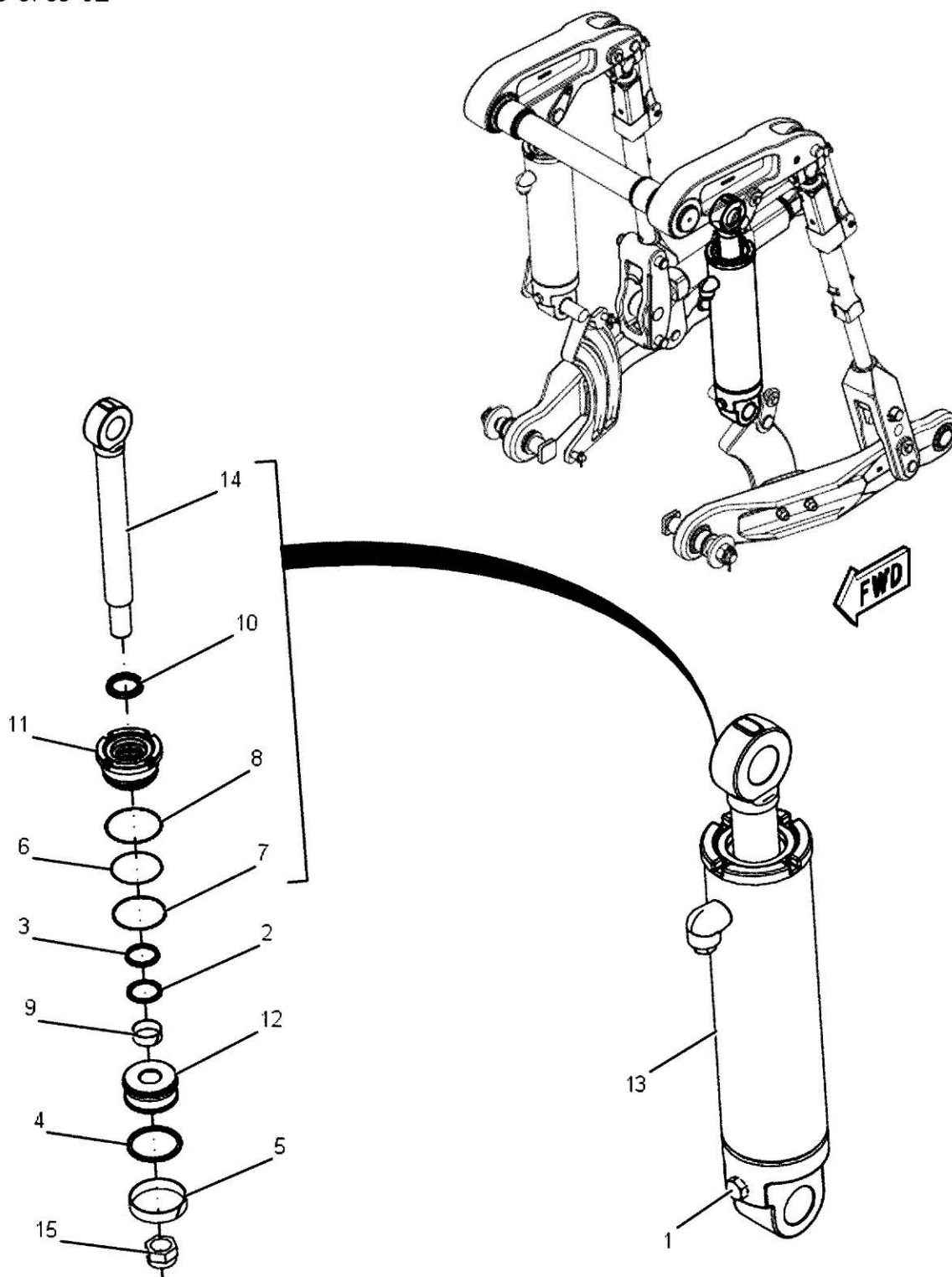


**525742D1 - LIMITER ASSEMBLY, RIGHT HAND**

---

ITEM	PART NUMBER	QTY	DESCRIPTION COMMENTS	TECHNICAL SPECIFICATION
1	NS	1	NON-SERVICEABLE PART	
2	525743D1	1	PIN	

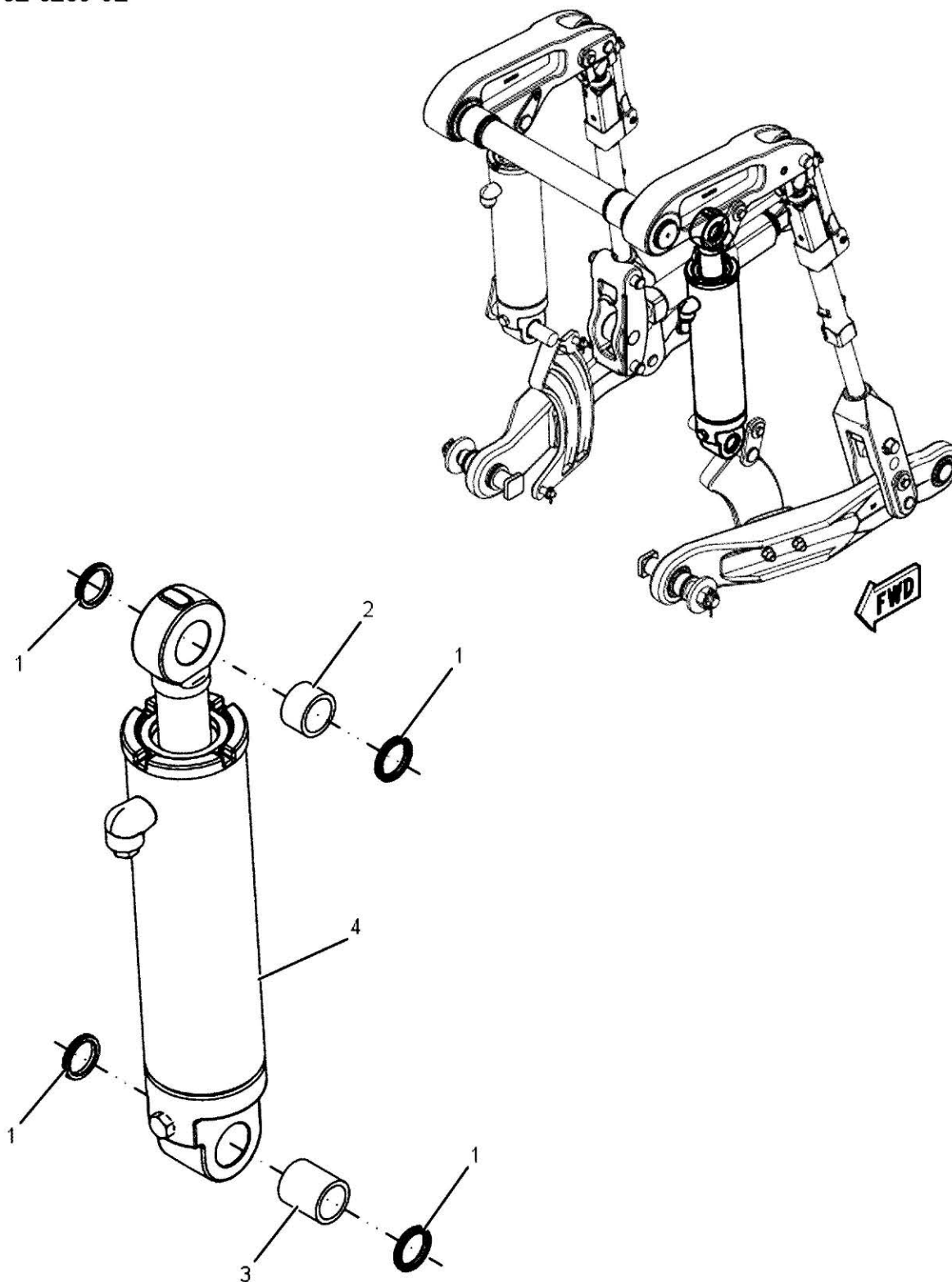
CH198-8789-02-



**CH198-8789 - HYDRAULIC CYLINDER GROUP, LIFT, 125MM BORE X 345MM STROKE**

ITEM	PART NUMBER	QTY	DESCRIPTION COMMENTS	TECHNICAL SPECIFICATION
1	NS	2	NON-SERVICEABLE PART 219-1891 IS A PLUG IN PROCESS.	
2	CH167-2201	1	SEAL BUFFER ROD	63.50 MM SHAFT DIA
3	CH167-2312	1	CUP SEAL	63.5MM X78.32MM X 7.6MM
4	CH186-4955	1	PISTON SEAL	
5	CH186-5137	1	RING PISTON	
6	CH2J-3961	1	BACKUP RING	
7	CH2J-8163	1	O-RING SEAL	117.07 X 3.53
8	CH5F-3999	1	O-RING SEAL	123.42I X 3.53
9	CH8T-0785	1	RING	
10	500686D1	1	WIPER SEAL DOUBLE LIP	
11	199-7545	1	HEAD	
12	199-7570	1	PISTON	
13	199-7638	1	CYLINDER	
14	199-7701	1	ROD	
15	5J-7878	1	HEX LOCKNUT	1-7/8"-12

CH192-6280-02-

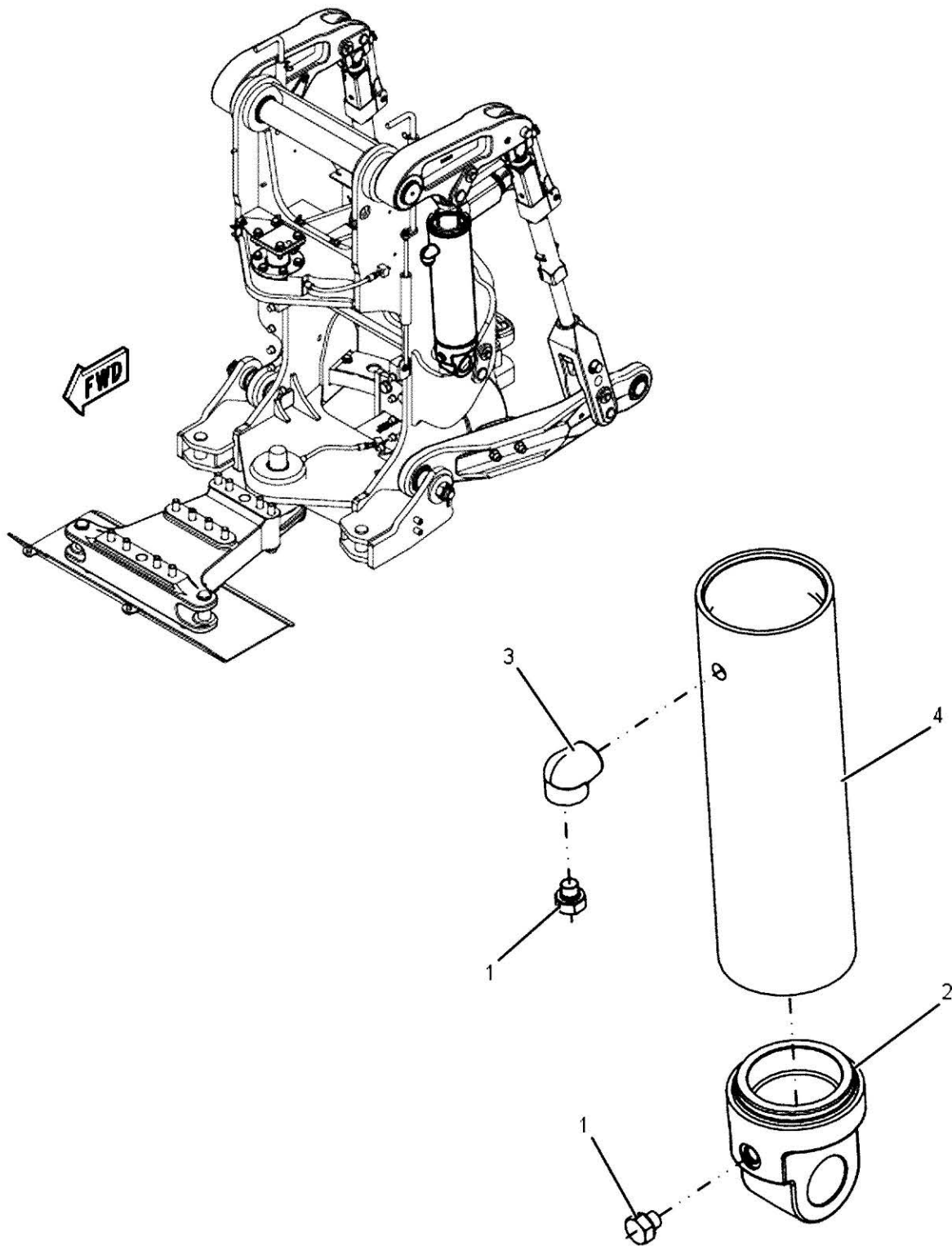


**CH192-6280 - HYDRAULIC CYLINDER GROUP, SEAL, 3 POINT HITCH LIFT**

---

ITEM	PART NUMBER	QTY	DESCRIPTION COMMENTS	TECHNICAL SPECIFICATION
1	400311X1	4	PIN SEAL	44.45MM ID X57.25MM OD X6.35MM
2	CH190-2623	1	BEARING	44.15MM X 57.2MM X 34.9MM
3	CH196-3024	1	BEARING	
4	CH198-8789	1	CYLINDER SEE PAGE 16-0015	

199-7638-02-



**199-7638 - CYLINDER**

---

ITEM	PART NUMBER	QTY	DESCRIPTION COMMENTS	TECHNICAL SPECIFICATION
1	NS	2	NON-SERVICEABLE PART	
2	CH199-7673	1	CAP	
3	CH9T-2381	1	BOSS	
4	NS	1	NON-SERVICEABLE PART	